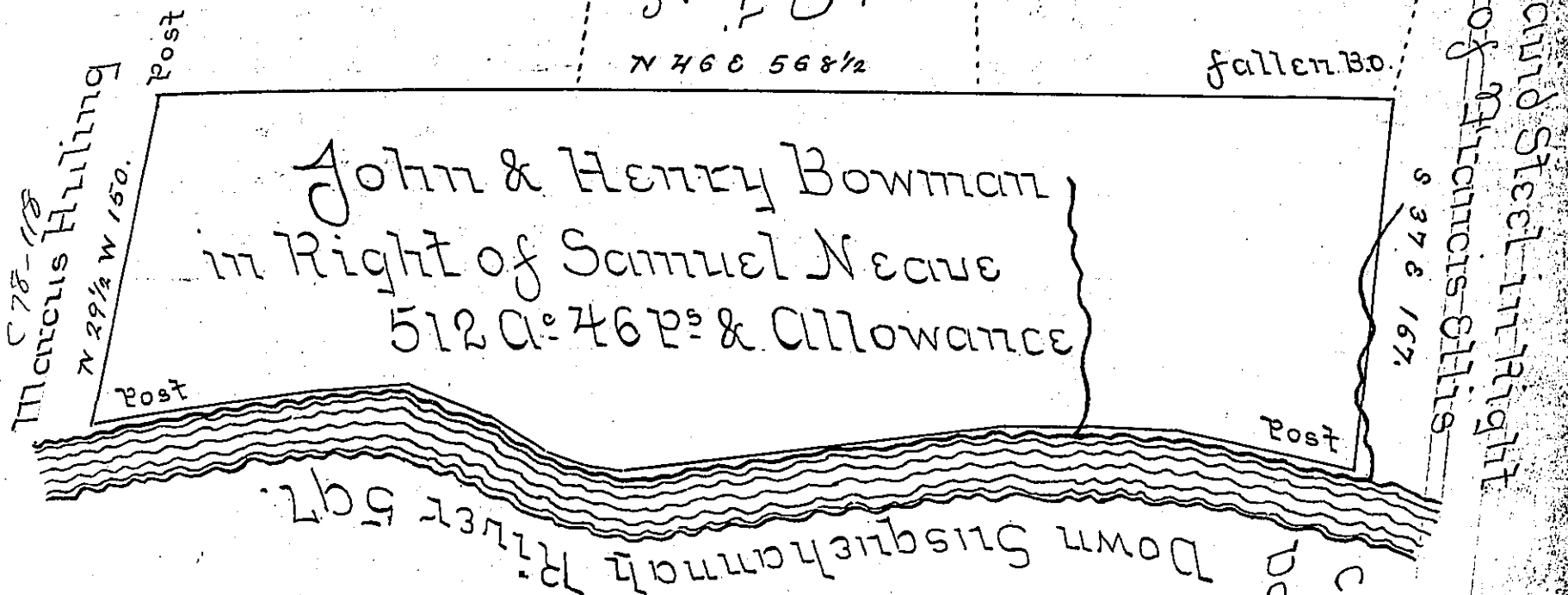


John McElroy  
in Right of  
Catharine Rodgers

Esq Arnold  
in Right of  
Catharine  
Rodgers

John Steels Heirs  
in Right of  
Catharine Rodgers



Courses and distances

Down Susquehanna River	S 57 1/2 W 80
	S 78 1/2 W 40
	S 75 W 39
	S 39 1/4 W 178
	S 55 1/2 W 16
	S 67 W 20
	S 75 W 32
	S 65 W 37
	S 43 W 42
	S 70 W 112
597 perches	

The draft of a tract of land Situate in Buffalo Township Perry County containing 512 a: 46 p: & allowance Originally Surveyed 29<sup>th</sup> Aug. 1761 on two <sup>Warrants</sup> one dated the 5<sup>th</sup> of March the other the 20<sup>th</sup> June 1755. Resurveyed April 21<sup>st</sup> 1837 in pursu-  
ance of an order of resurvey dated April 17<sup>th</sup> 1836

Wm West D.S.

To John Taylor Esq Surveyor  
General of Pennsylvania

IN TESTIMONY that the above is a copy of the original remaining on file in the Department of Internal Affairs of Pennsylvania; made conformably to an Act of Assembly approved the 16th day of February, 1833, I have hereunto set my Hand and caused the Seal of said Department to be affixed at Harrisburg, this twenty seventh day of February 1906.

*Geo A Brown*  
Secretary of Internal Affairs.